

By **GEORGE HOOPER**

Among ideas the post war years have brought to the U. S. is a growing trend towards suburban living. And probably nowhere on the Pacific Coast is this new tone more apparent than in the Arden District bordering the eastern edge of the City of Sacramento.

Here in an area of 10 square miles newcomers and former Sacramentans alike have taken up a country-type living that is making the Arden District one of the talked-about areas in northern California.

Today in the district bounded by El Camino Avenue on the north, Eastern Avenue on the east, Fulton and Arden Way on the northwest and the American River on the south and west, there are nearly 12,000 homes with a population of, roughly, 35,000 people.

YET IN ALL this growth and population the people of Arden have maintained the atmosphere of easy, uncrowded country life.

Arden is an area predominately residential, intermingled with modern shopping center districts, fine schools, churches, and parks. Its growth is remarkable, yet it cannot be called a mushroom or boomtown community.

DIRECTORS of the Arden Park and Parkway District are Lloyd C. Buchler, Dr. Walter S. Aldrich, George A. Cumming, Louise Watts, and Edward T. McCarty. Attorney Jesse Fluarty is executive-secretary of the park district.

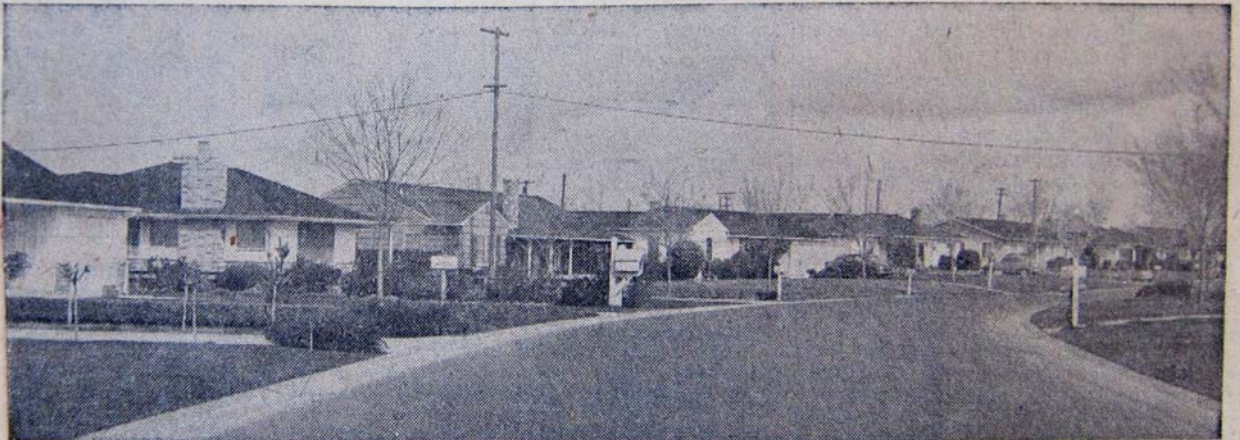
In commenting on La Sierra Park, "Skip" Winans, director of the State Recreation Commission, said it is one of the finest and best-developed small parks in the north state.

County Auditor James Hastings also commended the park board on the manner in which they handled its administration and on the general condition of the park.

Park board members have been instrumental, with the help of parents and local schools in promoting little league baseball and other recreation programs.



COUNTRY CLUB SHOPPING CENTRE, only one of several modern shopping districts in Arden.



ARDEN DISTRICT HOMES are some of the finest in the Sacramento area. This is a typical street scene in the district.